

NOTES:

1. MATERIAL: POLYESTER (PBT), 7.5% GLASS FILLED, UL 94V-0. COLOR: BLACK
2. FINISH: NONE
3. PRODUCT SPEC. : PS-43510-002
4. ALL DIMENSIONS SHOWN FOR REFERENCE ONLY.
5. PART TO BE USED WITH PODS SHOWN IN CHART. SEE SHEET 2 FOR ASSEMBLY INFORMATION.
6. PODS MAY BE PLACED IN ANY POSITION DESIRED.
7. FOR RECOMMENDED PANEL OPENING, SEE SHEET 2.
8. PART MATES WITH 43838-0*** RECEPTACLE SHROUD.
9. MATED CONNECTOR ASSEMBLIES MUST BE UNMATED WITH A STRAIGHT PULL IN THE DIRECTION SHOWN. TO PREVENT DAMAGE, AVOID ROTATING ASSEMBLIES DURING UNMATING.
10. SEE SHEET 2 FOR APPLICATION NOTES.

LATCHING AREA IS KEYPED TO PREVENT IMPROPER MATING.

| MATERIAL NO. | POSITIONS | DIM. "A" |
|--------------|-----------|------------------|
| 43839-0601 | 6 | 74.80 (2,945) |
| 43839-0501 | 5 | 62.50 (2,461) |
| 43839-0401 | 4 | 50.20 (1,976) |
| 43839-0301 | 3 | 37.90 (1,492) |
| 43839-0201 | 2 | 25.60 (1,007) |

| MATERIAL NO. | DESCRIPTION |
|--------------|-----------------------------|
| 43516-0001 | BLIND-MATE POD |
| 43515-0001 | 6 CIRCUIT MICRO-FIT PLUG |
| 43514-0001 | 4 CIRCUIT MINI-FIT JR. PLUG |
| 43513-0001 | 1 CIRCUIT MINI-FIT SR. PLUG |

AVAILABLE PODS

REVISED PANEL OPENING
EC NO. UCR 999-0902
DRAWN: KOTZ 00/02/11
CHK: KOTZ 00/02/11
APPR: COMERC 10/02/11

QUALITY SYMBOLS
MAJOR
CRITICAL
ANGULAR: ±

GENERAL TOLERANCES: (UNLESS SPECIFIED)
SCALE 4 : 1
DESIGN UNITS: mm □ INCH
DRAWN BY & DATE: COMERC1 97/10/06
CHECKED BY & DATE: COMERC1 97/10/06
APPROVED BY & DATE: FRY 97/10/10
CAD FILENAME: S4383901.DGN
DRAFT WHERE APPLICABLE MUST REMAIN WITHIN DIMENSIONS

TITLE: PANEL MOUNT PLUG SHROUD, 12.3 mm (.484) PITCH, COMPODRE SYSTEM
MATERIAL NO. MOLEX INCORPORATED
DRAWING NO. SD-43839-001
SHEET NO. 1 OF 2
SIZE D

43839

PANEL OPENING

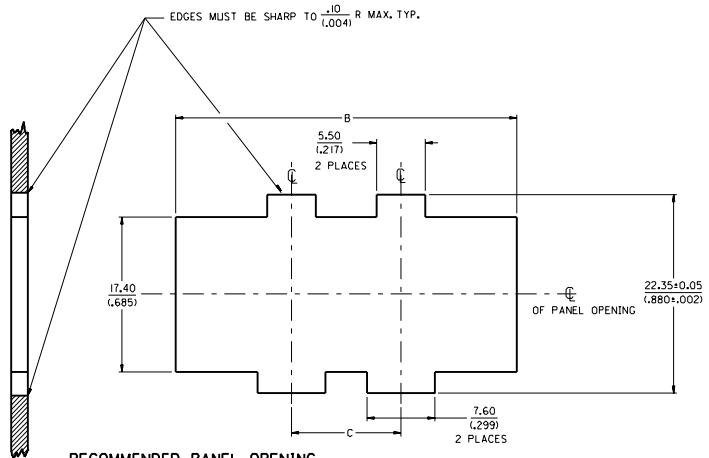
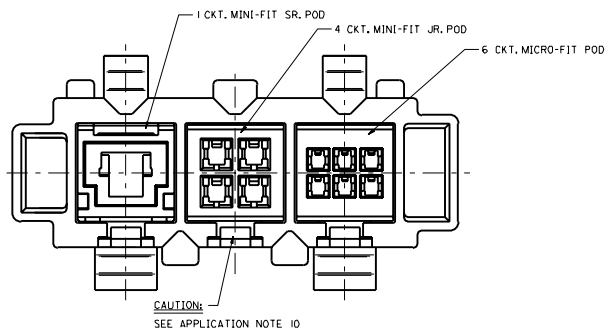
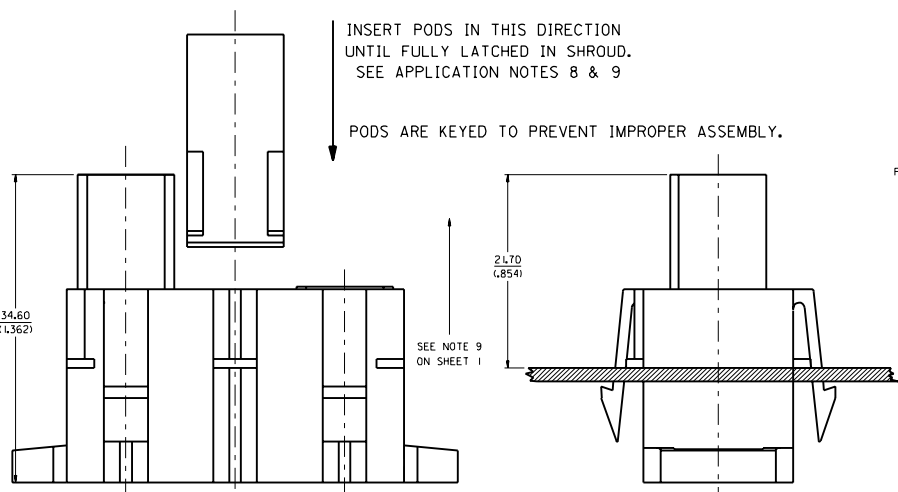
| POSITIONS | DIM. "B" ± 0.10 (± 0.004) | DIM. "C" ± 0.10 (± 0.004) |
|-----------|--|--|
| 2 | 38.40 (1.512) | 12.30 (.484) |
| 3 | 50.70 (1.997) | 24.60 (.969) |
| 4 | 63.00 (2.480) | 36.90 (1.453) |
| 5 | 75.30 (2.965) | 49.20 (1.937) |
| 6 | 87.60 (3.449) | 61.50 (2.421) |

- APPLICATION NOTES:
1. PLACE THE HIGH CURRENT MINI-FIT SR. PODS IN THE OUTER POSITIONS OF THE SHROUD TO MAXIMIZE CURRENT CARRYING CAPABILITY.
 2. IF MORE THAN ONE MINI-FIT SR. POD IS USED, PLACE THEM AS FAR APART AS POSSIBLE IN THE SHROUD TO MAXIMIZE CURRENT CARRYING CAPABILITY.
 3. REFER TO THE INDIVIDUAL PRODUCT'S PRODUCT SPECIFICATION FOR DETAILED PERFORMANCE CHARACTERISTICS OF EACH. (MINI-FIT JR., MINI-FIT SR., MICRO-FIT 3.0, ETC.)
 4. THE SHROUD PROVIDES SYSTEM POLARIZATION. PODS MUST NEVER BE APPLIED WITHOUT THE USE OF THE SHROUD, 'MALE' AND 'FEMALE' PODS CAN BE INSERTED INTO EITHER SHROUD FOR ADDITIONAL CONNECTOR POLARIZATION. WHEN MULTIPLE COMPODRE SYSTEMS ARE USED IN A SINGLE APPLICATION, THE PODS MAY BE POSITIONED TO PROVIDE FOOLPROOF HARNESS TO HARNESS POLARIZATION.
 5. 'PIC TAIL' OR HARNESS PODS CAN BE INSERTED INTO RIGHT ANGLE HEADER SHROUDS WHERE NECESSARY.
 6. TO OBTAIN THE LOWEST POSSIBLE MATING FORCES OF A FULLY LOADED SHROUD, THE TERMINALS MUST BE ALLOWED TO FLOAT AS DESIGNED. ASSURE THAT THE TERMINALS ARE CRIMPED PROPERLY BY USING ONLY MOLEX TERMINALS AND PROPERLY MAINTAINED MOLEX AUTHORIZED APPLICATION TOOLING.
 7. FOR PROPER MATING OF SHROUDS, THE POD LOCKING FINGERS ON BOTH SHROUDS MUST BE ORIENTED SUCH THAT THEY ARE ON THE SAME PLANE WHEN MATING THE CONNECTORS. THE SIDE LATCHES OF THE SHROUD ARE DESIGNED TO PROVIDE POLARIZATION.
 8. EACH SHROUD POD BAY IS KEYED TO PROVIDE POLARIZATION. THE POD MUST BE INSTALLED IN THE DIRECTION SHOWN. WHEN INSERTING A POD INTO THE SHROUD, THE 'U' SHAPED FEATURE ON THE SIDE OF THE POD MUST BE ORIENTED TO THE SAME FACE AS THE POD LOCKING FINGERS ON THE SHROUD.
 9. AS THE 'FACE TO FACE' MATING OF THE PODS IS CRITICAL TO ASSURE THAT ALL CONTACTS ARE FULLY 'WIPE'D, THE TOLERANCES OF THE SHROUD TO SHROUD MATING ARE TIGHTLY CONTROLLED. THEREFORE, WHEN SEATING A POD INTO A SHROUD, MAKE CERTAIN THAT THE SHROUD LOCKING FINGER IS FULLY SEATED INTO THE POD. IT MAY BE NECESSARY AT TIMES TO APPLY A SLIGHT VERTICAL FORCE TO THE LOCKING FINGER TO SEAT THE POD FULLY. ALSO, WHEN MATING TWO SHROUDS, ASSURE THAT THE SHROUD POSITIVE LOCKS, LOCATED ON THE SIDES OF THE SHROUD, ARE FULLY ENGAGED WITH THE MATING SHROUD.
 10. PODS MAY BE REMOVED FROM SHROUDS IF REQUIRED. TO REMOVE A POD, SIMPLY DEFLECT THE LOCKING FINGER AWAY FROM THE POD, USING A FINGER NAIL OR A SMALL STRAIGHT BLADE SCREWDRIVER, JUST FAR ENOUGH TO DISENGAGE THE POD. CAUTION: EXCESSIVE DEFLECTION MAY DAMAGE OR DESTROY THE LOCKING FINGER.
 11. THE SHROUD PROVIDES SYSTEM POLARIZATION. PODS MUST NEVER BE APPLIED WITHOUT THE USE OF A SHROUD.

INSERT PODS IN THIS DIRECTION UNTIL FULLY LATCHED IN SHROUD. SEE APPLICATION NOTES 8 & 9

PODS ARE KEYED TO PREVENT IMPROPER ASSEMBLY.

PANEL PUNCH SIDE



RECOMMENDED PANEL OPENING FROM OUTSIDE OF BOX

PANEL THICKNESS: 1.57 (0.062) TO 2.29 (0.090)

| | | | | | | | | |
|---|---------------------------|---|--|--|--------------------------|--|-----------------------|--|
| REVISED PANEL OPENING EC NO. UCR2000-0902 DRWNO: 000021 CHK: KOTZ 000021 APPR: COMERCL 000021 | QUALITY SYMBOLS | GENERAL TOLERANCES: (UNLESS SPECIFIED) | SCALE: 4 : 1 | DESIGN UNITS: <input checked="" type="checkbox"/> mm <input type="checkbox"/> INCH | THIRD ANGLE PROJECTION | DIMENSIONS: <input checked="" type="checkbox"/> mm <input type="checkbox"/> INCH <input type="checkbox"/> ONLY | SHT: REV | |
| | MAJOR: $\nabla 0$ | mm INCH | DRAWN BY & DATE: COMERCL 97/10/07 | TITLE: PANEL MOUNT PLUG SHROUD. 12.3 mm (.484) PITCH, MULTI-FIT SYSTEM | | | REVISE ON CAD ONLY | |
| | MINOR: $\nabla 0$ | 4 PLACES $\pm 0.---$ $\pm.---$ | CHECKED BY & DATE: COMERCL 97/10/07 | APPROVED BY & DATE: FRY 97/10/10 | MOLEX INCORPORATED | | | |
| | CRITICAL: $\nabla 0$ | 3 PLACES $\pm 0.---$ $\pm.---$ | CAD FILENAME: S4383902.DGN | MATERIAL NO. SEE CHART | DRAWING NO. SD-43839-001 | | | |
| DESCRIPTION | ANGULAR: \pm $^{\circ}$ | DRAFT WHERE APPLICABLE MUST REMAIN WITHIN DIMENSIONS. | THIS DRAWING CONTAINS INFORMATION THAT IS PROPRIETARY TO MOLEX INCORPORATED AND SHOULD NOT BE USED WITHOUT WRITTEN PERMISSION. | | | | SHEET NO. 2 SIZE D | |